



# MORECAMBE



FLOTATION ENERGY

## Morecambe Offshore Windfarm: Generation Assets Plans

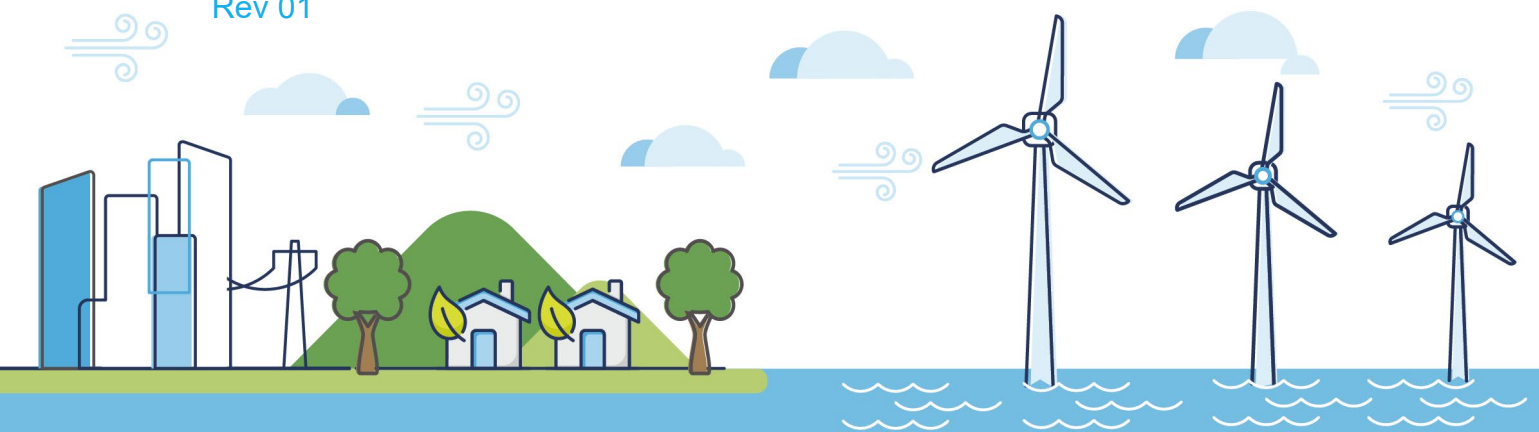
### Volume 2

### Offshore Works Plan

PINS Document Reference: 2.3

APFP Regulation: 5(2)(j)

Rev 01

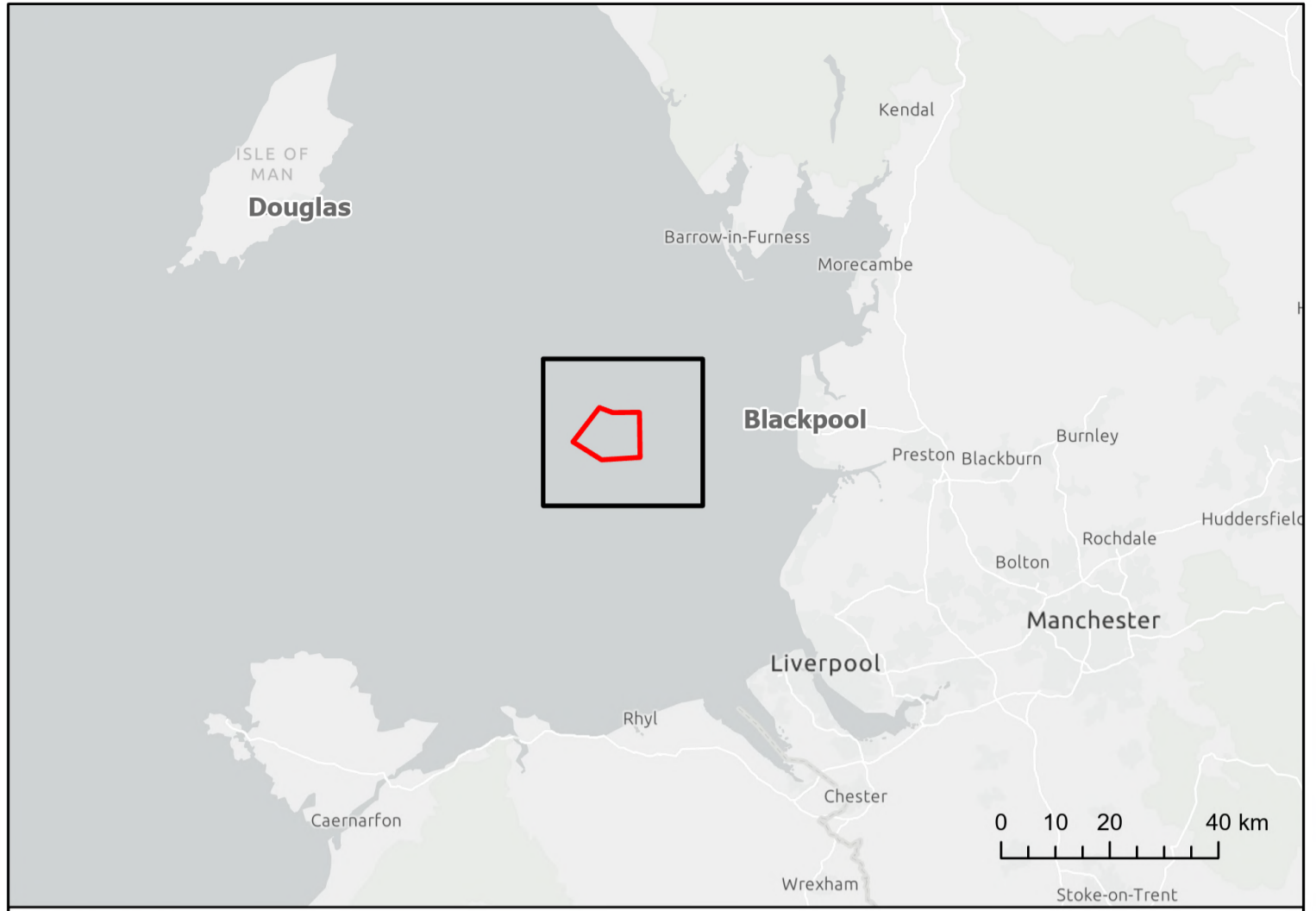
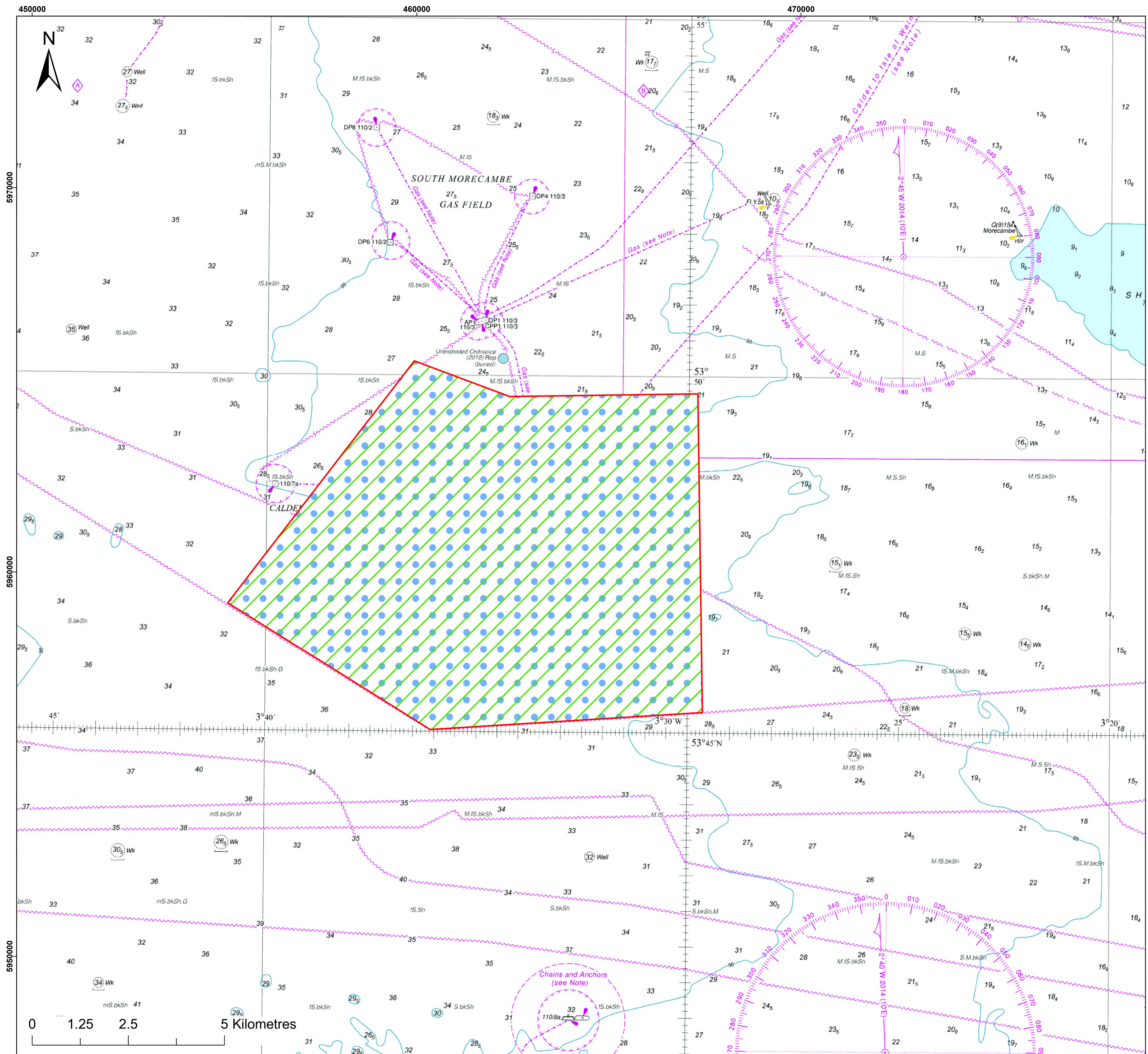


## Document History

<b>Doc No</b>	MOR001-FLO-CON-ENV-PLN-0018	<b>Rev</b>	01
<b>Alt Doc No</b>	PC1165-RHD-ES-XX-PN-Z-0003		
<b>Document Status</b>	Approved for Use	<b>Doc Date</b>	May 2024
<b>PINS Doc Ref</b>	2.3	<b>APFP Ref</b>	5(2)(j)

<b>Rev</b>	<b>Date</b>	<b>Doc Status</b>	<b>Originator</b>	<b>Reviewer</b>	<b>Approver</b>	<b>Modifications</b>
01	May 2024	Approved for Use	Royal HaskoningDHV	Morecambe Offshore Windfarm Ltd	Morecambe Offshore Windfarm Ltd	n/a





- Legend:**
- Order Limits
  - Work No. 2 : Offshore Substation Platform and platform link cables
  - Work No. 1 : Wind Turbine Generators and inter-array cables

Main map scale is 1:50,000 when printed at A1 (native page size)  
 Inset and key maps will vary.

© Haskoning DHV UK Ltd, 2024. Contains OS data © Crown copyright and database right, 2024. © British Crown and OceanWise, 2024. All rights reserved. License No. EMS-EK001-801211. Not to be used for Navigation. Esri UK, Esri, TomTom, Garmin, FAO, NOAA, USGS

**Project:**  
 Morecambe Offshore Windfarm: Generation Assets  
 Development Consent Order Plans

**Title:**  
 Offshore Works Plan

APFP Ref:	Doc Ref: 2.3				
	5(2)(j) Drawing No: PC1165-RHD-DC-OF-DG-Z-0087				
Revision:	Date:	Drawn:	Checked:	Size:	Scale:
P03	16/04/2024	SB	GC	A1	1:50,000
P04	01/05/2024	SB	GC	A1	1:50,000

Co-ordinate system: WGS 1984 UTM Zone 30N

